

EM76

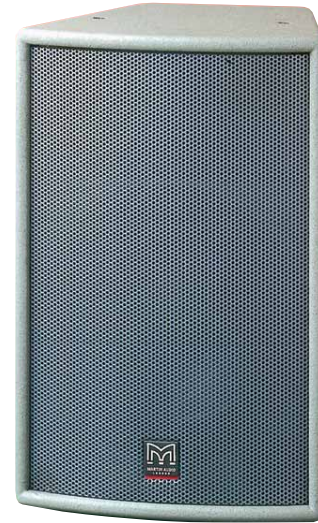
Compact two-way passive system

features

- ▶ Compact two-way passive system
- ▶ 1" (25mm) exit compression driver
- ▶ High SPL capability
- ▶ Multiple threaded inserts for ease of installation

applications

- ▶ Foreground/Background music for clubs and bars
- ▶ Theatres
- ▶ AV presentations
- ▶ Conference centres



architectural

The widely used EM76 is particularly suited to applications which require high output and full-range reproduction from a compact loudspeaker system. It is a two-way passive, trapezoid system featuring a high power rated 12" cone bass drive unit with a 2.5" coil capable of withstanding high temperatures during prolonged use. The HF device is a 1" compression driver mounted on a 70° horizontal x 40° vertical constant directivity horn.

The EM76 can be used with EM sub-bass systems via the EMXIA controller. Fittings include ten M8 flying inserts for use with EM Series flying accessories, as well as a pole mounting socket.

Century Point, Halifax Road, Cressex Business Park,
High Wycombe, Buckinghamshire HP12 3SL, England.
Telephone: +44 (0)1494 535312 Facsimile: +44 (0)1494 438669
E-mail: info@martin-audio.com
All information is Copyright © 2003 Martin Audio Ltd.

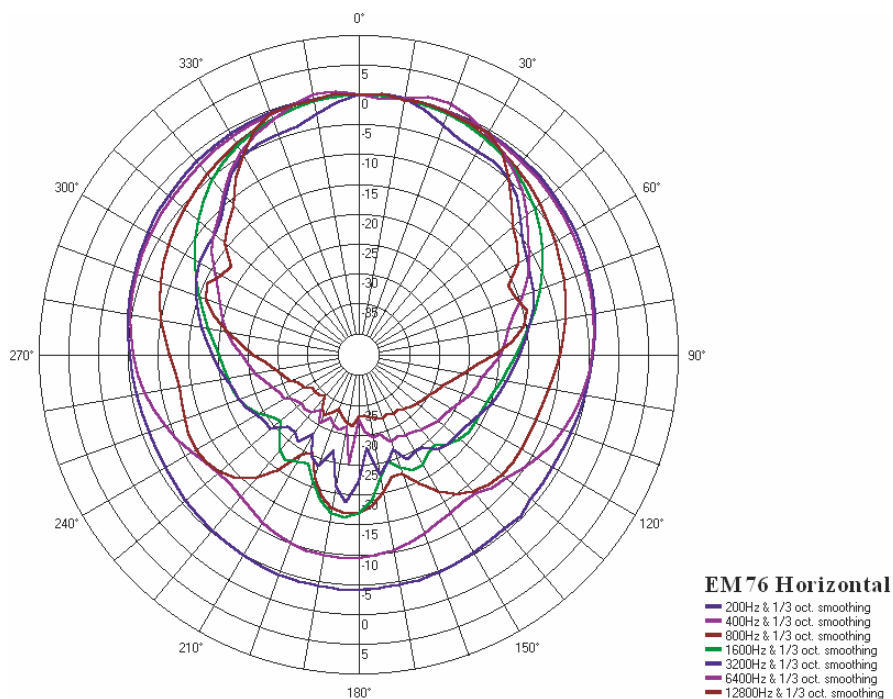
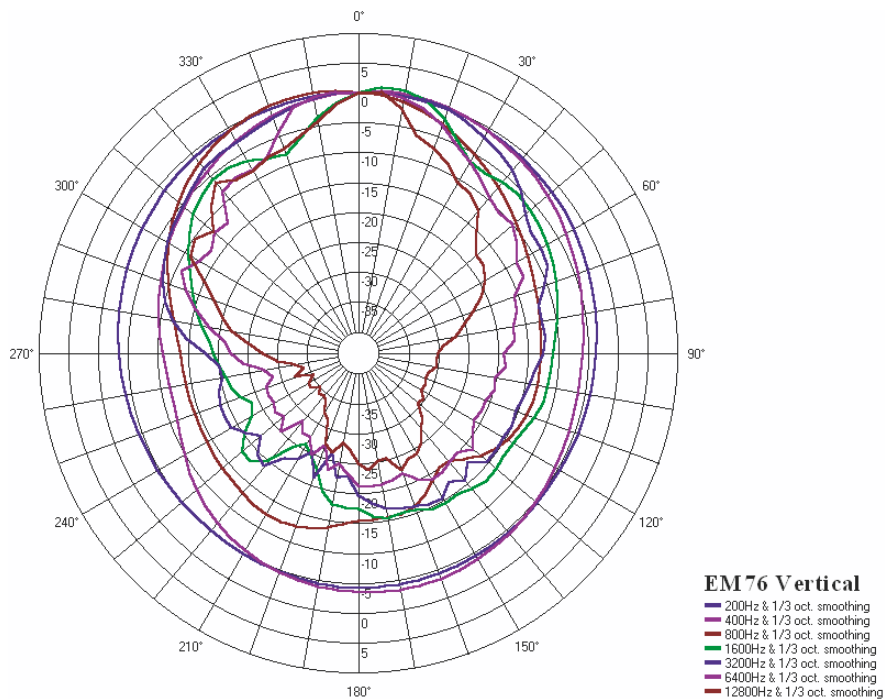


EM76

Compact two-way passive system

polar plots

architectural



Century Point, Halifax Road, Cressex Business Park,
High Wycombe, Buckinghamshire HP12 3SL, England.
Telephone: +44 (0)1494 535312 Facsimile: +44 (0)1494 438669
E-mail: info@martin-audio.com
All information is Copyright © 2003 Martin Audio Ltd.



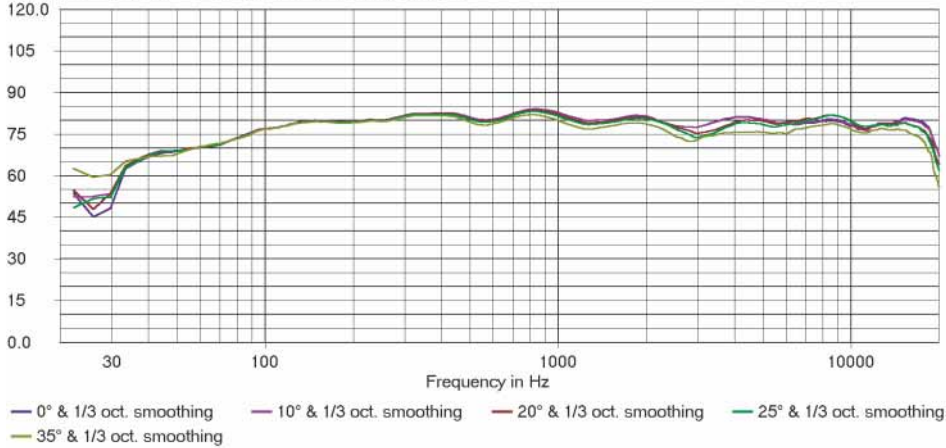
EM76

Compact two-way passive system

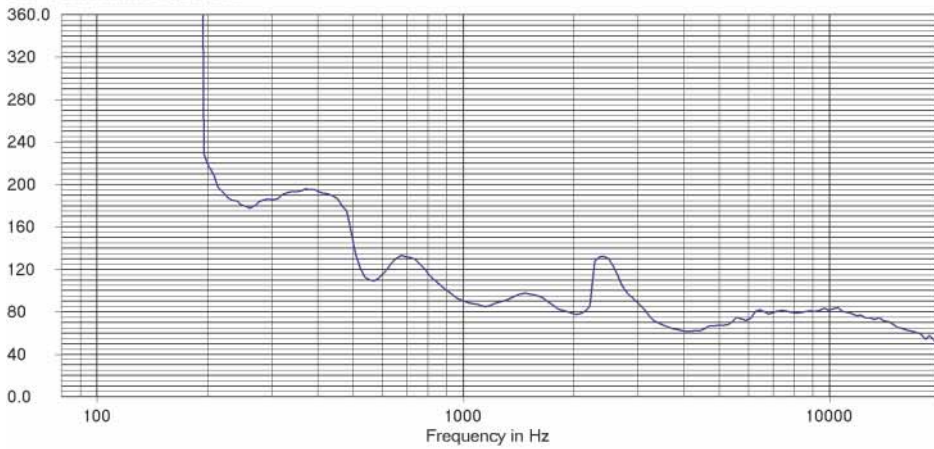
frequency responses

architectural

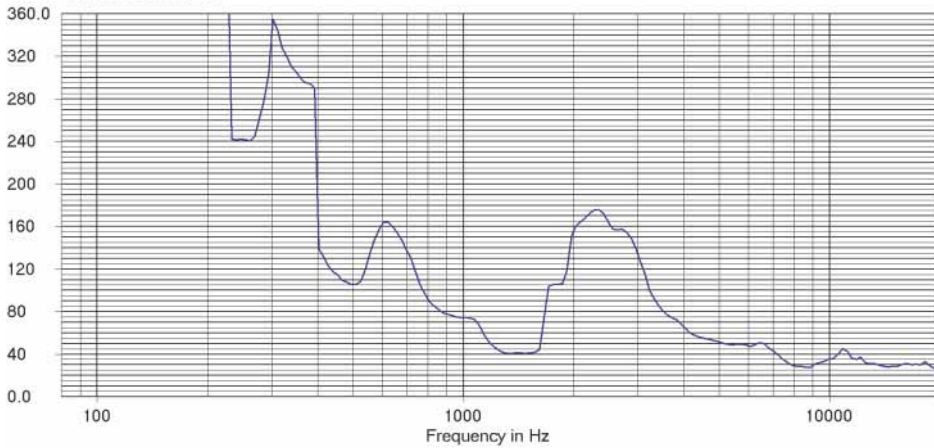
EM76 Horizontal Magnitude in dB SPL/2.83V at 1 meter



EM76 Horizontal Beamwidth



EM76 Vertical Beamwidth



Century Point, Halifax Road, Cressex Business Park,
High Wycombe, Buckinghamshire HP12 3SL, England.
Telephone: +44 (0)1494 535312 Facsimile: +44 (0)1494 438669
E-mail: info@martin-audio.com
All information is Copyright © 2003 Martin Audio Ltd.

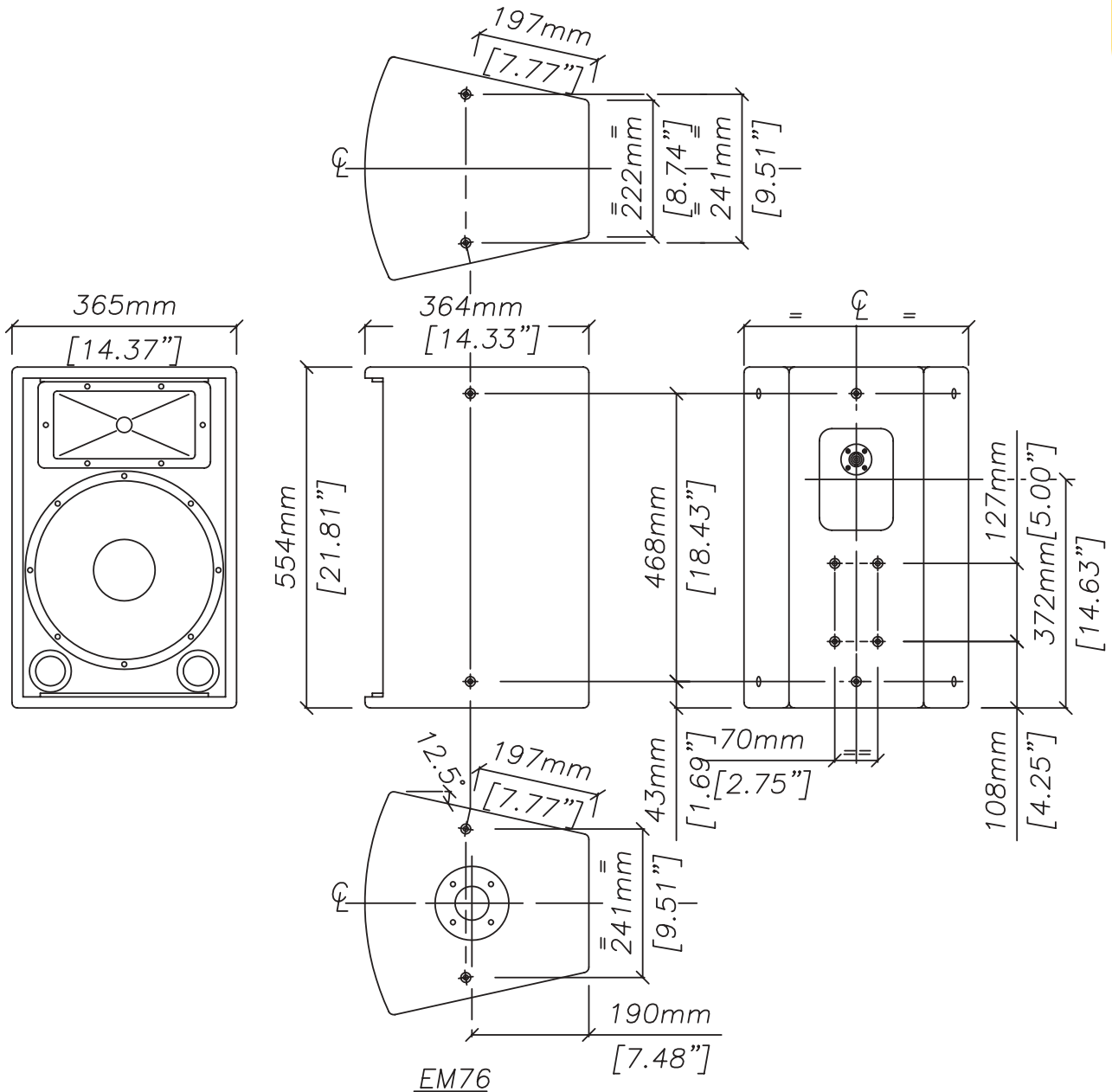


EM76

Compact two-way passive system

overall dimensions

architectural



Century Point, Halifax Road, Cressex Business Park,
High Wycombe, Buckinghamshire HP12 3SL, England.
Telephone: +44 (0)1494 535312 Facsimile: +44 (0)1494 438669
E-mail: info@martin-audio.com
All information is Copyright © 2003 Martin Audio Ltd.



EM76

Compact two-way passive system

technical specifications

TYPE	Compact, two-way passive trapezoid
FREQUENCY RESPONSE (1)	60Hz-18kHz \pm 3dB
DRIVERS	12" (300mm) bass driver 1" (25mm) exit compression driver
RATED POWER (2)	200W AES, 800W peak
RECOMMENDED AMPLIFIER	400-550W into 4 ohms
SENSITIVITY (3)	98dB
MAXIMUM SPL (4)	120dB continuous, 126dB peak
NOMINAL IMPEDANCE	8 ohms
DISPERSION (-6dB)	70° horizontal, 40° vertical
CROSSOVER	1.5kHz passive
ENCLOSURE	40 litre, vented
FINISH	Textured green paint
PROTECTIVE GRILLE	Grey perforated steel
CONNECTORS	1 x Neutrik NL4
FITTINGS	4 x M8 inserts for Omnimount 100 10 x M8 inserts, 1 x pole mount socket
DIMENSIONS	(W) 365mm x (H) 554mm x (D) 364mm (W) 14.4ins x (H) 21.8ins x (D) 14.3ins
WEIGHT	22kg (48lbs)

accessories

HTKCT05	8mm Shouldered Eye Bolt
HTKM20	Wall Bracket (supplied in pairs)
HTKEM03A	Flying Yoke

Notes

- (1) Measured on-axis in half space at 2 metres, then referred to 1 metre.
- (2) AES Standard ANSI S4.26-1984.
- (3) Measured in half space conditions at 2 metres with 1 watt input, using band limited pink noise, then referred to 1 metre.
- (4) Measured in half space conditions at 2 metres using band limited pink noise, then referred to 1 metre.

Trade Descriptions Act

Due to Martin Audio's policy of continuing improvement, we reserve the right to alter these specifications without prior notice. Martin Audio is committed to refining state of the art sound reinforcement, combining in-depth product and field applications research with advanced manufacturing techniques. Every Martin Audio product is built to the highest manufacturing standards and rigorously tested to ensure that it meets the performance criteria specified in the design.

architectural and engineering specifications

The loudspeaker system shall be of the two-way passive type consisting of one 12" (300mm) direct radiating reflex loaded low frequency transducer and one 1" (25mm) exit HF compression driver mounted on a constant directivity horn in a trapezoidal enclosure. The enclosure shall be fitted with an integral pole mounting socket and threaded inserts for wall and ceiling mounting. Low and high frequency sections shall be integrated by an internal 1.5kHz passive crossover network.

Performance of the loudspeaker system with its electronic controller shall meet or exceed the following criteria:

Frequency response measured 1 metre on axis shall be 60Hz-18kHz \pm 3dB.

High frequency dispersion at -6dB points shall be 70° H x 40° V.

Power handling shall be 200W AES, 800W peak.

Rated impedance shall be 8 ohms.

Maximum SPL measured at 1 metre on axis shall be 120dB continuous, 126dB peak.

Dimensions (W) 365mm x (H) 554mm x (D) 364mm (14.4ins x 21.8ins x 14.3ins).

Weight 22kg (48lbs).

The loudspeaker system shall be the Martin Audio EM76.

Century Point, Halifax Road, Cressex Business Park,
High Wycombe, Buckinghamshire HP12 3SL, England.
Telephone: +44 (0)1494 535312 Facsimile: +44 (0)1494 438669
E-mail: info@martin-audio.com
All information is Copyright © 2003 Martin Audio Ltd.

